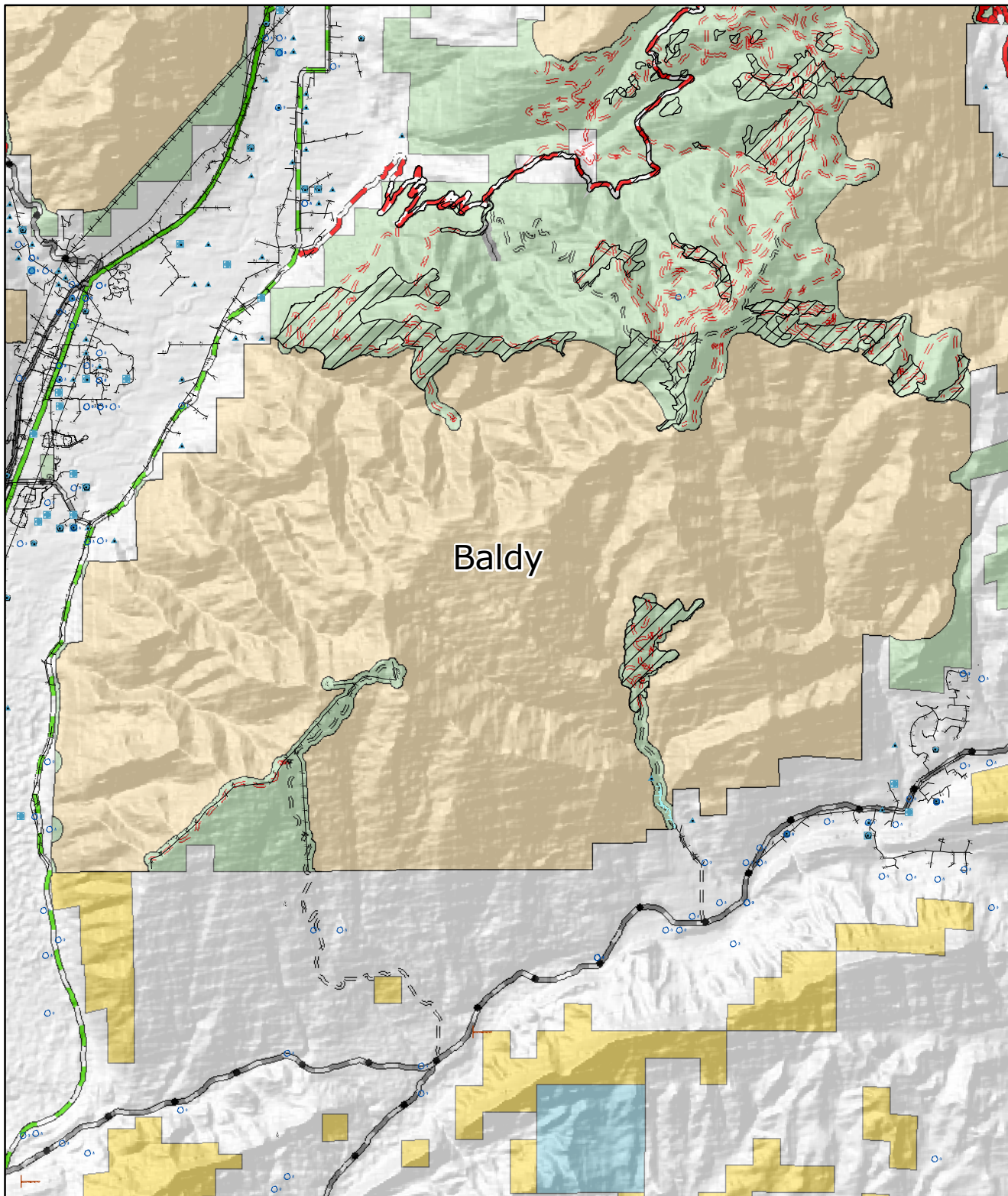


San Juan Public Lands Baldy Roadless Area



Baldy

Legend

Water Structures

- Jurisdictional Dam
- Non-Jurisdictional Dam
- Well or Well field

- Timber Harvests (1960-present)

Ski Areas

- DURANGO MOUNTAIN RESORT
- SILVERTON OUTDOOR LEARNING AND RECREATION CENTER
- FSSDE sj_pipeline
- Electric transmission lines
- Water ditches

Aerial Hazards

- AERIAL CABLE
- INDUS PLANT
- SMOKESTACK
- BUILDING
- STORAGE STRUC
- TANK
- TOWER

Aerial Hazards

- AERIAL CABLE
- BRIDGE
- GAS WELL
- INDUS PLANT
- LOOKOUT TOWER
- MISC MAN-MADE
- STREAM GAGE
- TOWER
- Water pumps
- Water pipes
- Water ditches
- Oil and Gas Wells
- Oil and Gas Facilities

Legend

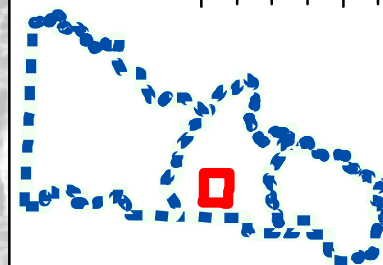
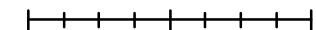
- 2006 Inventoried Roadless Areas
- Bureau of Land Management
- Bureau of Reclamation
- Colorado Division of Wildlife
- National Forest
- Indian Reservation
- National Park Service
- Patented Lands
- State Lands
- Wilderness
- Special Areas

Authorized Roads

- 1 - BASIC CUSTODIAL CARE (CLOSED)
- 2 - HIGH CLEARANCE VEHICLES
- 3 - SUITABLE FOR PASSENGER CARS
- 4 - MODERATE DEGREE OF USER COMFORT
- 5 - HIGH DEGREE OF USER COMFORT
- UNDETERMINED STATUS
- OBLITERATION CANDIDATES
- CL 1 - PRIMARY HIGHWAY
- CL 2 - SECONDARY HIGHWAY
- CL 3A - LIGHT DUTY PAVED ROAD
- CL 3B - LIGHT DUTY GRAVEL RD
- CL 3C - LIGHT DUTY NATIVE SURFACED ROAD
- CL 4 - UNIMPROVED ROAD



0 0.5 1 2 Miles



The USFS and BLM attempt to use the most current and complete geospatial data available. Geospatial data accuracy varies by theme on the map. Using this map for other than their intended purpose may yield inaccurate or misleading results. The USFS and BLM reserve the right to correct, update or modify geospatial inputs without notification.